

NOTE:

1. MATERIAL:

- 1-1: CODING HOUSING: PA9T UL94V0, COLOR: REFERENCE ON PAGE.2 TABLE.
- 1-2: CONTACT: BRASS C3604
- 1-3: BODY: ZINC#3
- 1-4: INSULATOR: PTFE

2. PLATING FINISH:

- 2-1 CONTACT: 1.25~1.75um NICKEL PLATING ON OVERALL
(SEE ORDER INFORMATION-NOTE 8) GOLD FLASH UNDER PLATING ON OVERALL
- 2-2 BODY: 8~20um Cu PLATING ON OVERALL
2~6um NICKEL UNDER PLATING ON OVERALL
3~6um MATTE TIN PLATING ON OVERALL

3. SPEC. PLS. REFER TO SPEC-ARFTZB36317-TGx-x

4. PACKAGE PLS. REFER TO 92801-XXXXX-XX

5. ELECTRICAL PERFORMANCE:

- 5-1 IMPEDANCE: 50Ω
- 5-2 FREQUENCY RANGE: DC~4 GHz
- 5-3 WORKING VOLTAGE: ≤ 60 V D.C
- 5-4 DIELECTRIC VOLTAGE : 800V AC IN 1-MINUTE.

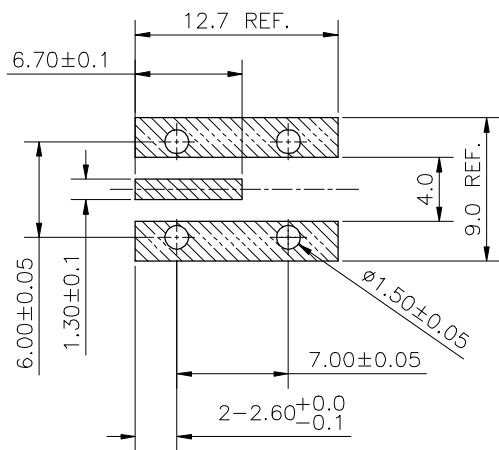
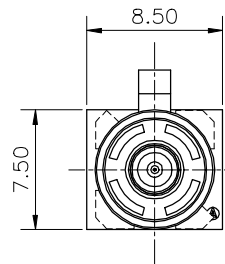
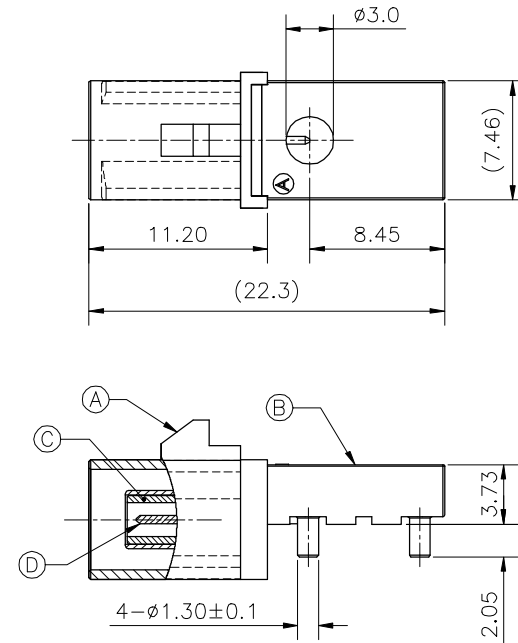
6. MACHANICAL :

- 6.1 MATING CYCLES : 25 CYCLES MINIMUM.

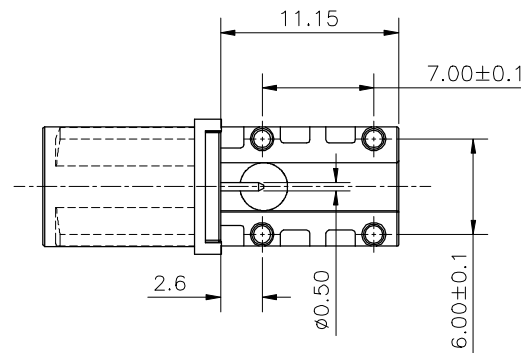
7. THIS COMPONENT AND ITS HOMOGENEOUS SUB COMPONENTS ARE RoHS COMPLIAN.

8. PART NO.: 92801-C 1 x x x-CA1

TYPE	PLATING
C:SINK BOARD	2:1~3u"(0.025~0.075um)
PORT	0:6u"(0.15um)
1:SINGLE PORT	PACKING
2:DOUL PORT	0:T/R
CODING	1:TUBE
X:REFERENCE ON PAGE.2 TABLE	2:TRAY

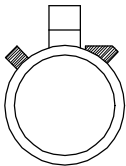
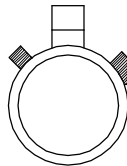
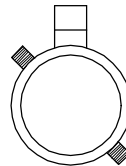
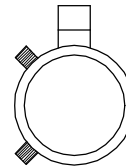
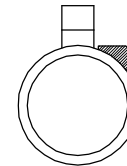
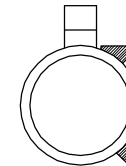
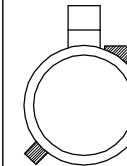
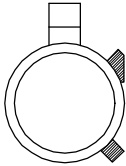
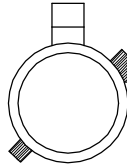
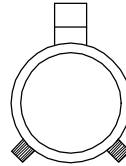

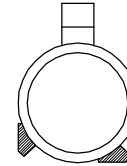
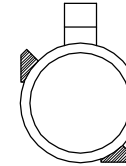
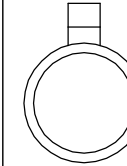





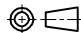
RECOMMENDED PCB LAYOUT
GENERAL TOLERANCE ±0.05



D	CONTACT	1
C	INSULATOR	1
B	BODY	1
A	HOUSING	1
ITEMS	DESCRIPTION	Q'TY

QUALITY SYMBOLS MAJOR Ⓢ CRITICAL Ⓢ GENERAL TOLERANCES (UNLESS SPECIFIED) X ±0.5 .X ±0.25 .XX ±0.15 .XXX ±0.1 ANGLES ±2°	DRAWN BY Chen Yun Ju DATE 23/11/15	ACES ELECTRONICS	
	CHECKED BY Wu Chung Hsin DATE 23/11/15	TITLE FAKRA PLUG SINK FOR PCB	
UNITS mm	SCALE 2:1	SIZE A4	REV A
SHEET NO. 1 OF 2	DWG NO. 92801-C1xxx-CA1-aces	N/A	

CODING	A	B	C	D	E	F	G
PLUG							
COLOR	BLACK	WHITE	BLUE	BORDEAUXVIOLET	GREEN	BROWN	GRAY
RAL	sim.9005	sim.9001	sim.5005	sim.4004	sim.6002	sim.8011	sim.7031
CODING	H	I	K	L	M	N	Z
PLUG							
COLOR	VIOLET	BEIGE	CURRY	CARMINE-RED	PASTEL-ORANGE	WHITE-GERRN	WATERBLUE
RAL	sim.4003	sim.1001	sim.1027	sim.3002	sim.2003	sim.6019	sim.5021

QUALITY SYMBOLS MAJOR  CRITICAL  GENERAL TOLERANCES (UNLESS SPECIFIED) X ±0.5 .X ±0.25 .XX ±0.15 .XXX ±0.1 ANGLES ±2°	DRAWN BY Chen Yun Ju	DATE 23/11/15	
	CHECKED BY Wu Chung Hsin	DATE 23/11/15	
UNITS mm		SIZE A4	RFQ NO. N/A
SCALE 2 : 1	SHEET NO. 2 OF 2	REV A	DWG NO. 92801-C1xxx-CA1-aces